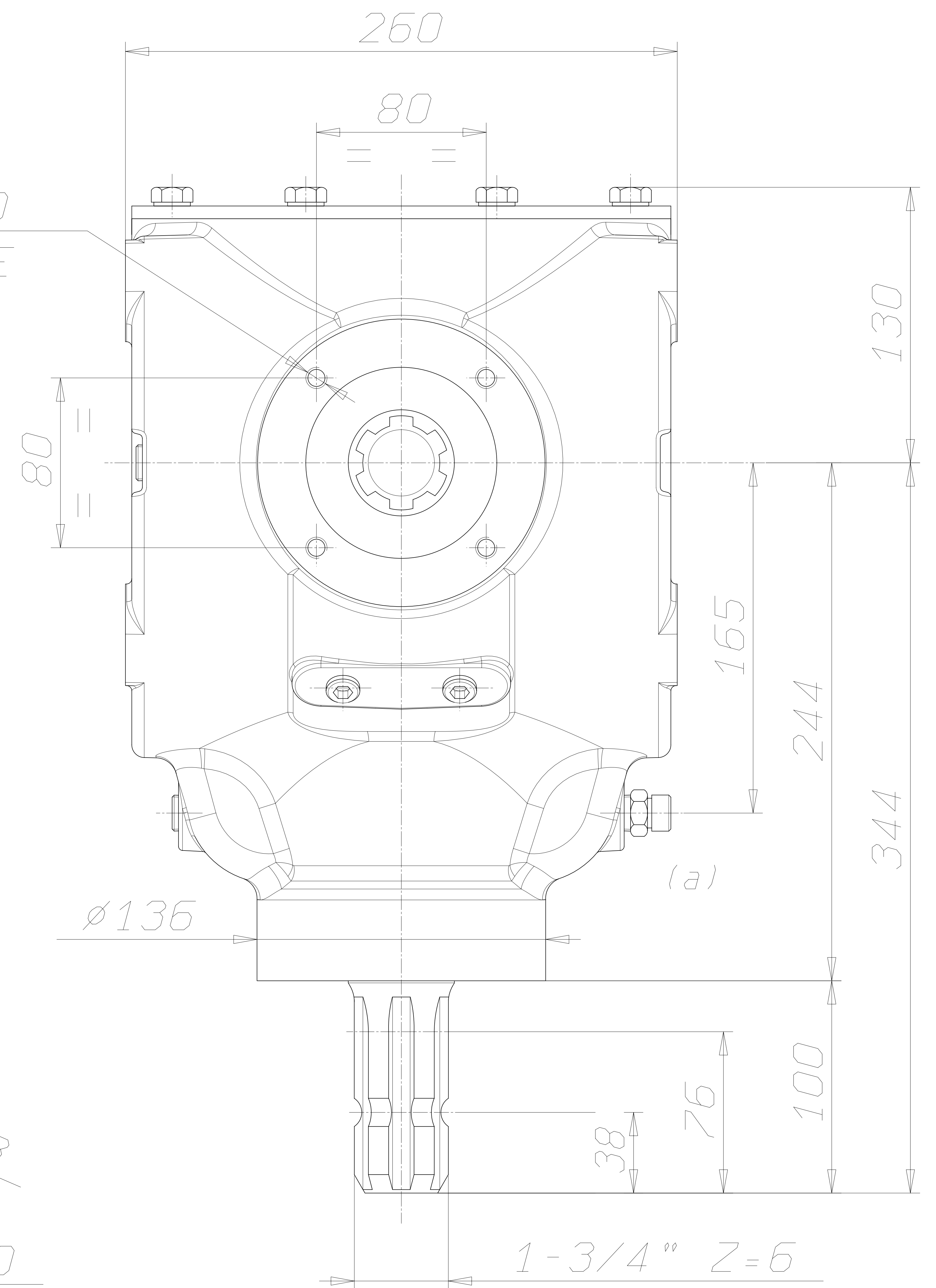
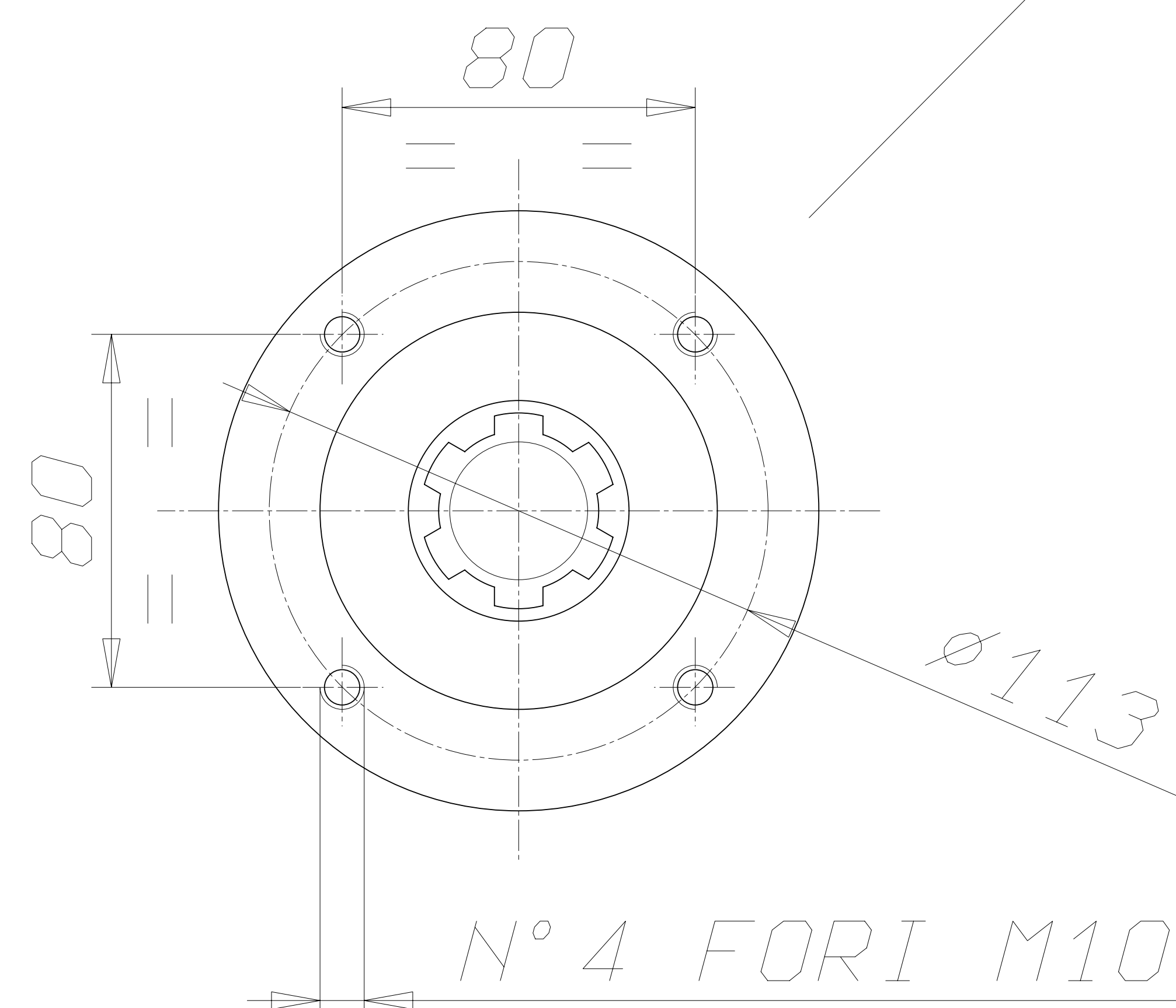


N° 8 FORI M20  
N° 4 PER PARTE

TAPPO DI SFIATO

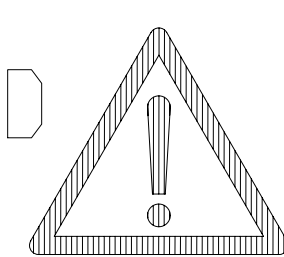
N° 8 FORI M10  
N° 4 PER PARTE

VISTA PARZIALE DA "A"



**WARNING!**

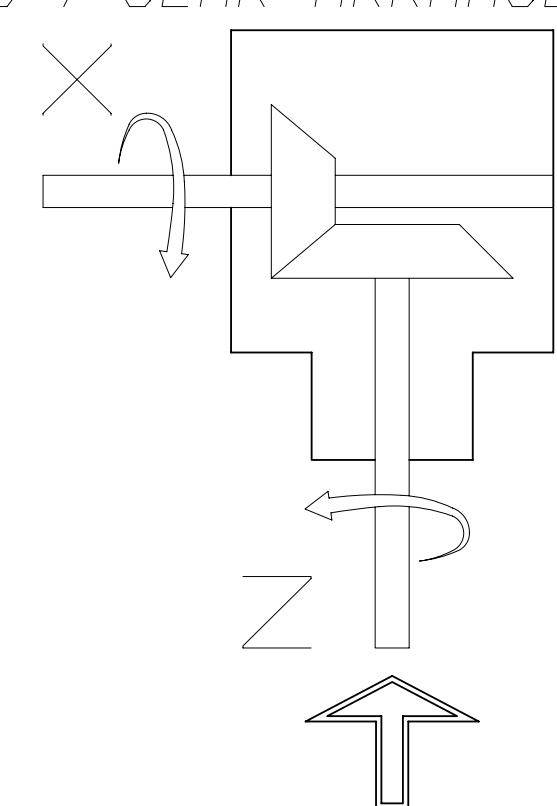
ROTATING SHAFTS MARKED ARE NOT SHIELDED. ANY SHAFT AND COUPLING NOT GUARDED BY LOCATION MUST BE SHIELDED BY AN INTERACTIVE GUARDING SYSTEM. BONDOLI & PAVESI DECLINES RESPONSIBILITY IF PROPER GUARDS ARE NOT PROVIDED AND MAINTAINED.



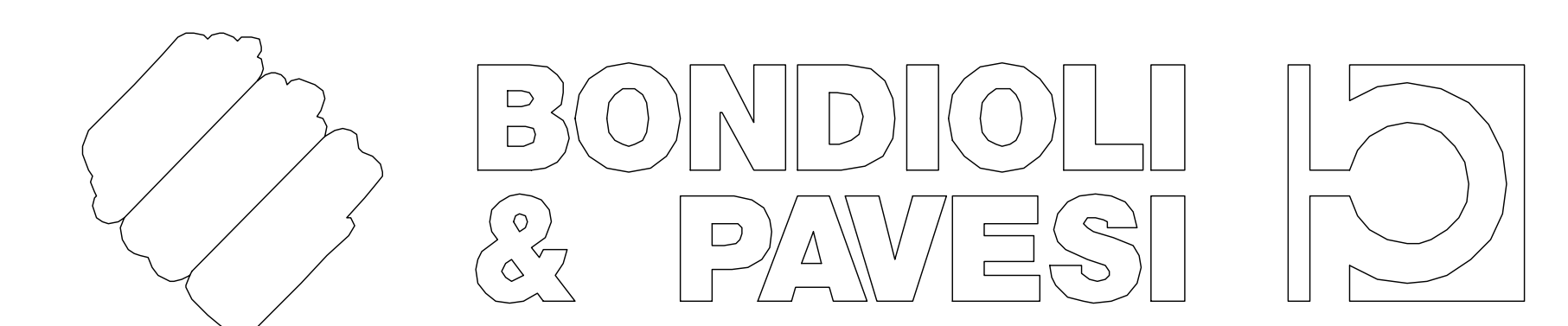
a	SOSTITUITO TAPPO DI SFIATO, VEDI SEZIONATO.	Turci	26/11/2010
Rev.	Descrizione Modifica	Operatore	Data

SOSTITUISCE S2150080R220

MONTAGGIO / GEAR ARRANGEMENTS



RAPPORTO / RATIO	TIPO / TYPE	CLIENTE / CUSTOMER	
1:1.25	2155		
GIRI IN ENTRATA / INPUT SPEED	TIPO DI MACCHINA / TYPE OF IMPLEMENT	PESO / WEIGHT	DISEGNATO / DESIGNED BY
540			M.Bulgarelli
POTENZA IN ENTRATA / INPUT POWER	RIF.CLIENTE / CUSTOMER REF.		DATA / DATE
172 CV 126 KW			11/5/02



CODICE / CODE	REV.
S2155080R220	a